

WETLANDS IN A COMPLEX WORLD

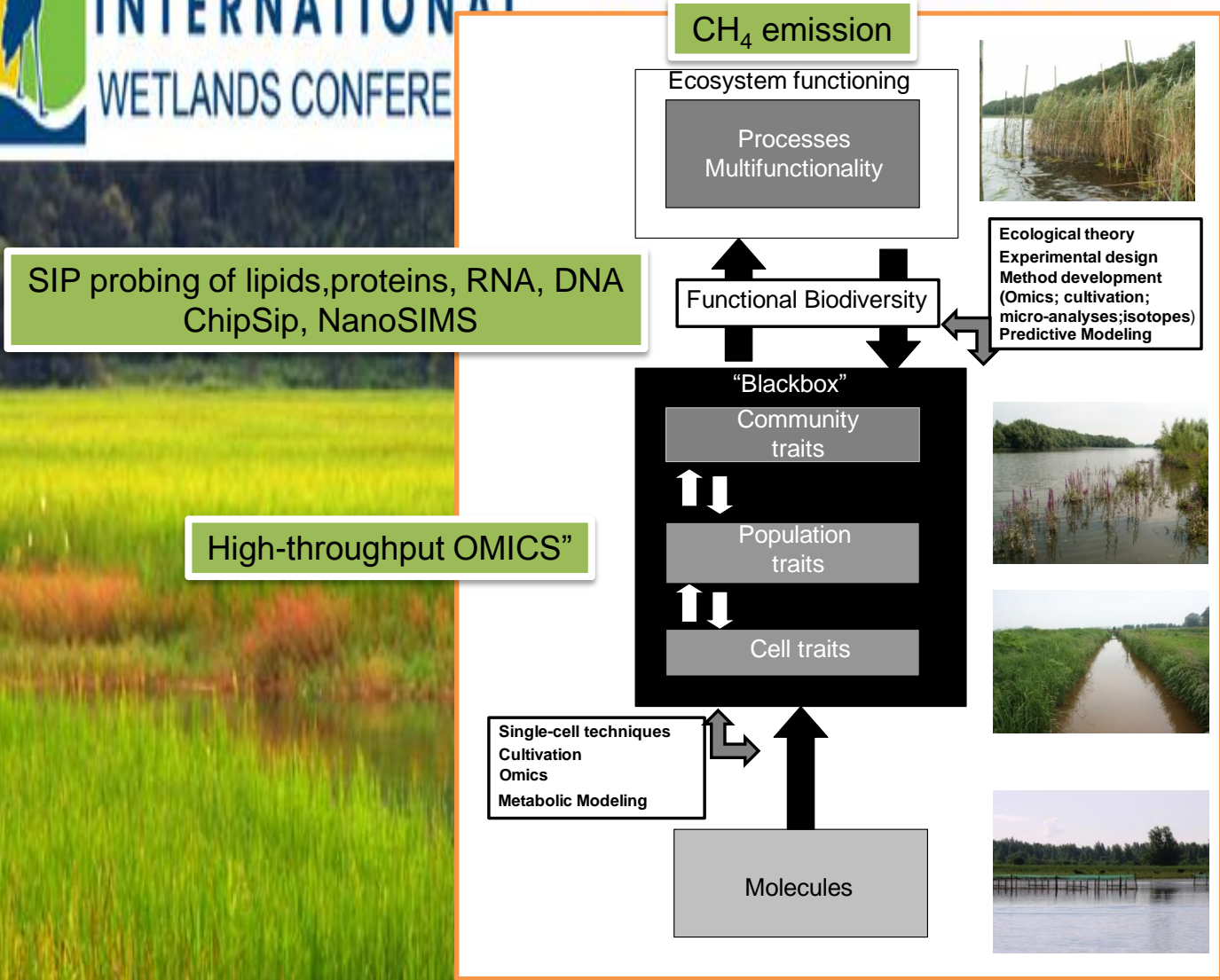
JUNE 3-8, 2012
ORLANDO FLORIDA, USA

Session 42:
**Linking Microbial Community Structure to
Greenhouse Gas Emissions from Wetlands**
(Organised by Andy Ogram)

Moderator
Paul L.E. Bodelier
Netherlands Institute of Ecology, Wageningen, the Netherlands

WETLANDS IN A COMPLEX WORLD

JUNE 3-8, 2012
ORLANDO FLORIDA, USA



Stephen McAlister (University of Oregon)
**Linking Methane Production Rate to Methanogen
Community Structure in Peatland Soils**

Irina Kravchenko (Winogradsky Institute of Microbiology RAS, Moscow)
**Methane Emission and Microbial Communities of the
Methane Cycle in Natural and Drained Peatlands**

Susannah Tringe (DOE Joint Genome Institute, Walnut Creek)
Microbial Communities in Restored Freshwater Wetlands

Andy Ogram (University of Florida, Gainesville)
**Life at the Front: Microbial Ecology of Shifting Nutrient Limitations
and Methanogenesis in the Northern Everglades**